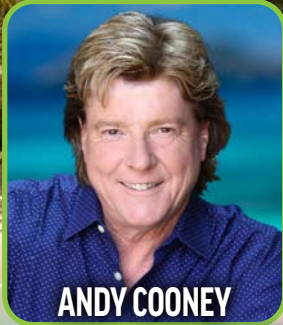


Andy Cooney's 26th ANNUAL Cruise of Irish Stars

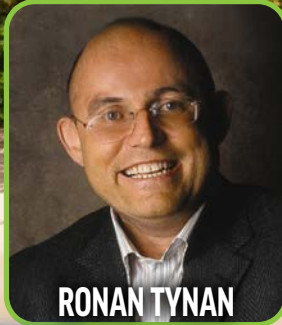
FEBRUARY 9 - FEBRUARY 16, 2025

Roundtrip from Fort Lauderdale, Florida to the Western Caribbean
Your Ports of Call include: Princess Cays, Bahamas; Ocho Rios, Jamaica; Grand Cayman, Cayman Islands; Cozumel, Mexico

STARRING



ANDY COONEY



RONAN TYNAN



**Aboard the
SKY PRINCESS**

WITH



THE NEW YORK TENORS



THE SCREAMING ORPHANS



CATSKILLS CEILI BAND



**TOM
COMERFORD**



THE BYRNE BROTHERS



19TH STREET BAND



DEE REILLY



DREAMS OF FREEDOM



**TOMMY
MULVIHILL**



DIDDY IDOLS



BILL LEWIS



WILLIE LYNCH



CELTIC ROVERS



DECLAN AUNGIER



CIARA FOX



EMERALD FIRE DANCERS

Daily Mass
with
Fr. Francis Pizzarelli



Irish Group Dancing
Ceile & Set Dancing

~Book Now!~
and receive
\$700
in Amenities

Prices start at
\$1139⁰⁰

plus \$401.39 port taxes and fees

NEW PRINCESS PLUS AMENITY PROGRAM:

PRINCESS PLUS BEVERAGE PACKAGE

(Beer, Wine & Liquor by the Glass;

Specialty Coffees; Smoothies & Bottled Water)

PRE-PAID CREW APPRECIATION GRATUITIES

UNLIMITED WIFI

(one device per person)

AND MORE!

(applies to first & second passengers only)

Deposit of \$350 per person due at time of reservation.

DEPOSIT FULLY REFUNDABLE UNTIL

OCTOBER 23, 2024

Call Travel Professionals:

845-651-4441

Email: travelpro@jimmysturr.com

Roundtrip Bus Service from The Villages, FL

Call Carolyn Brennan 904-534-2031

www.cruiseofirishstars.com

**All performances are exclusive to those booked
through Travel Professionals ONLY!**

***Entertainment and Itinerary are subject to change**

Andy Cooney's 26th ANNUAL CRUISE OF IRISH STARS 2025

7 – Day Western Caribbean Cruise Round-trip from Ft. Lauderdale, FL

Aboard the SKY PRINCESS

February 9 – February 16, 2025

CRUISE ITINERARY				
DAY	DATE	PORT	ARRIVE	DEPART
1	Sun. Feb 9	Ft. Lauderdale, Florida		3:00pm
2	Mon. Feb 10	Princess Cays, Bahamas	9:00 am	4:00 pm
3	Tue. Feb 11	At Sea		
4	Wed. Feb 12	Ocho Rios, Jamaica	8:00 am	4:00 pm
5	Thu. Feb 13	Grand Cayman, Cayman Islands	7:00 am	4:00 pm
6	Fri. Feb 14	Cozumel, Mexico	10:00 am	7:00 pm
7	Sat. Feb 15	At Sea		
8	Sun. Feb 16	Ft. Lauderdale, Florida	06:00 am	



CATEGORIES AND PRICING

•• Prices vary due to the cabin location on the Sky Princess and do not include taxes and fees ••

INSIDE STATEROOMS – Our Most Affordable Option

These staterooms are the perfect place to recharge your batteries. Our most affordable option, featuring two twin beds or a queen-size bed. Other amenities include a refrigerator, hair dryer, TV, closet and bathroom with shower

ID - \$1,139 per person IC - \$1,199 per person IB - \$1,259 per person

BALCONY – Front Row Seat for Beautiful Scenery

This impressive stateroom offers the added indulgence of a balcony and gives you more space than a standard stateroom. Enjoy your own private outdoor space with a table, two chairs, and a relaxing view of the inspiring scenery surrounding you, whether a beautiful sunset over the ocean or a new city to explore. It's also perfect to enjoy cocktails before dinner or a leisurely breakfast.

BW* - \$1,499 per person BD - \$1,639 per person BC - \$1,699 per person BB - \$1,739 per person

*BW is a partially obstructed view stateroom

DELUXE BALCONY – Spectacular Views From Your Room

Choose this enhanced version of a balcony stateroom with more space and a comfortable sofa bed. Enjoy a larger balcony with more room to view the beautiful scenery as you sail from destination to destination and take in the ocean breeze for a wonderful and romantic evening or morning. This stateroom also includes some of the amenities offered in a mini-suite stateroom. This is larger than the standard balcony stateroom – 233 SQ FT INCLUDING THE BALCONY PLUS A SOFA BED.

DW* - \$1,559 per person DE - \$1,779 per person DC - \$1,819 per person DB - \$1,869 per person

*DW is a partially obstructed view stateroom

MINI-SUITES – Add an Element of Luxury to Your Stay

Choose a luxurious Mini-Suite with balcony which is substantially larger than a balcony stateroom and receive a complimentary welcome glass of champagne. Mini-Suites include a separate sitting area with sofa bed, premium bathroom amenities with a tub and shower and two-flat-panel televisions. Mini-Suites offer an appealing and affordable option for families and groups looking for a little extra space.

MC - \$1,929 per person MB - \$1,989 per person

All rates are based on double occupancy, single supplement additional. Price difference in the categories is based on cabin location. Taxes and fees are \$401.39 per person and are not included in the above per person rates. Call for quotes on third and fourth passenger in a cabin. Prices, itinerary & performers are subject to change without notice.



ALL TRAVEL ARRANGEMENTS MUST BE BOOKED THROUGH TRAVEL PROFESSIONALS

62 North Main St., Suite 114, Florida, NY 10921

845-651-4441 • E-Mail: travelpro@jimmysturr.com

Deposit of \$350 per person due at time of reservation. • Credit Card Payments / Checks Payable to Travel Professionals

DEPOSIT FULLY REFUNDABLE UNTIL OCTOBER 23, 2024